

# UniCel® DxC 600i Daily Start Up



## **For Training Purposes Only**

The job aids included here are shortened versions of the procedures. Please refer to the sources listed below for the complete detailed procedures and all precautions. Information included here is correct as of the date published. Always verify you have current information before proceeding.

### **Source:**

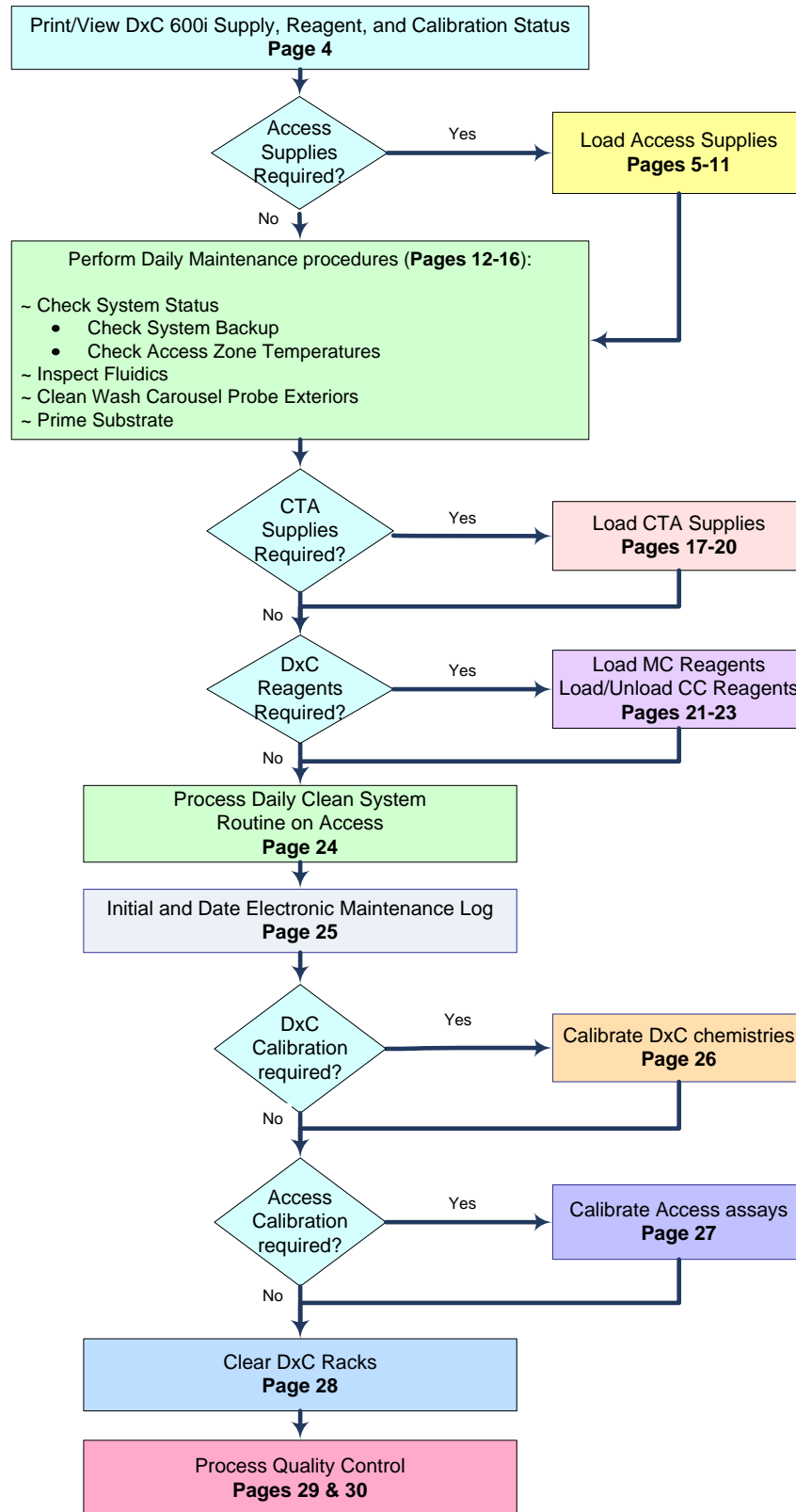
**UniCel® DxC 600i Synchron® Access Clinical Systems  
Instructions for Use  
PN A93695  
Version AA, October 2010**

**UniCel® DxC Synchron® Clinical Systems  
Instructions for Use  
PN A93719  
Version AA, October 2010**

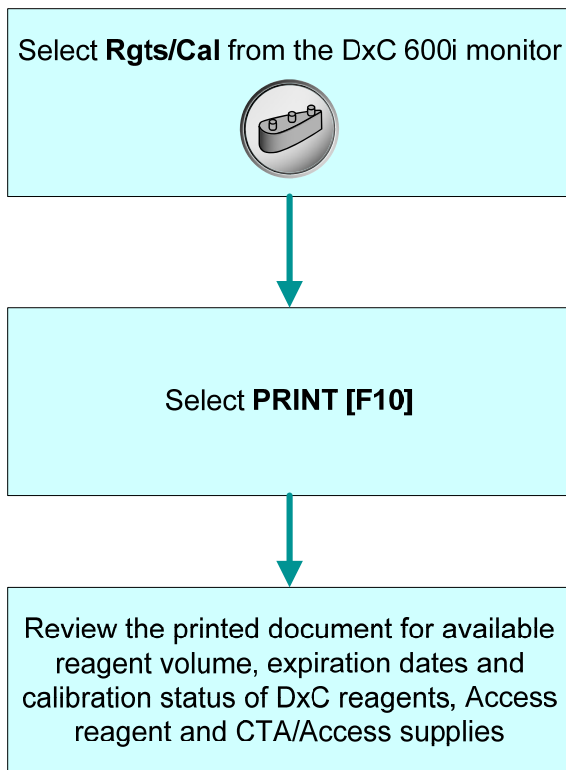
**Access 2 Help  
Version i6.0.05**



# DxC 600i Daily Start Up



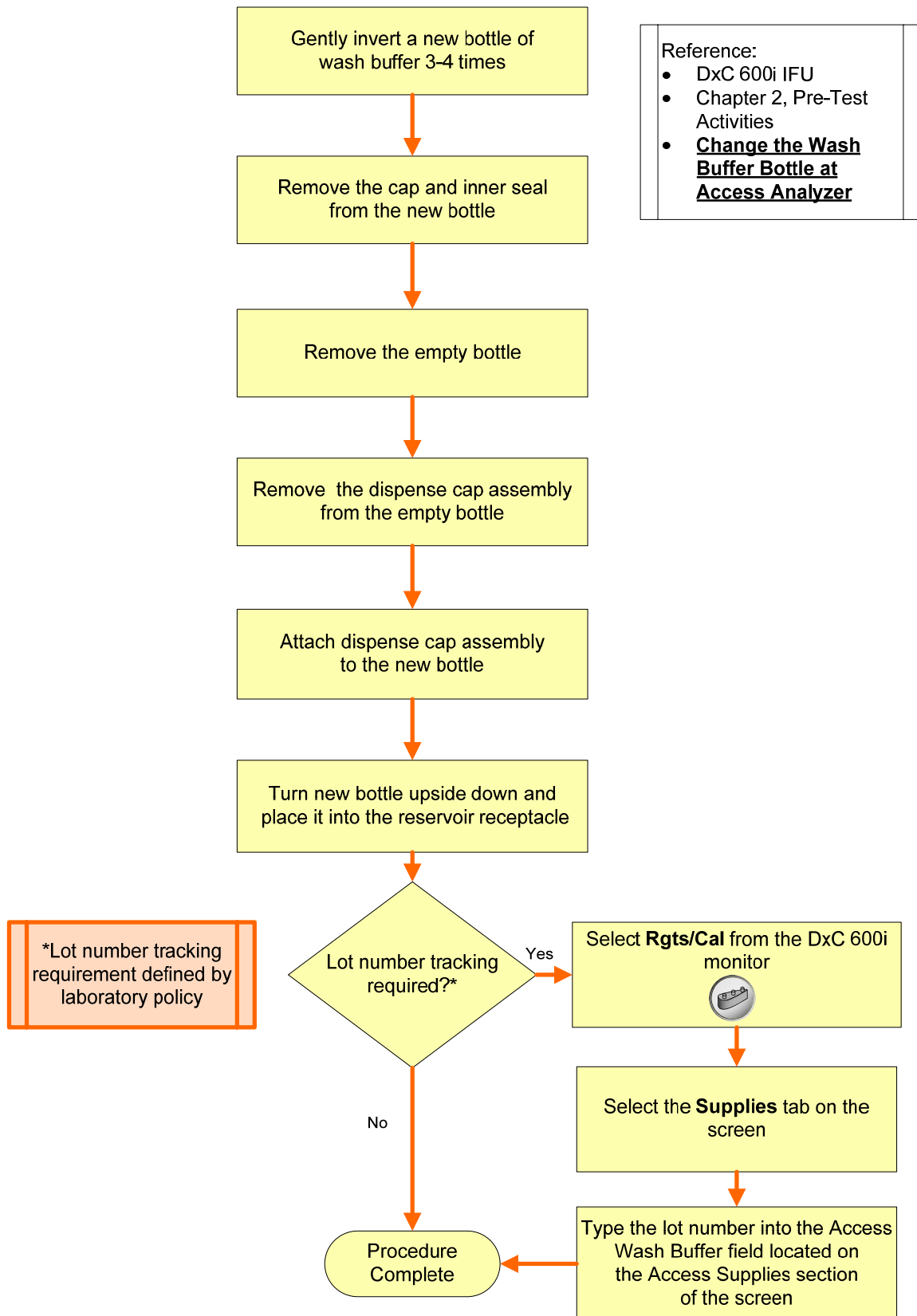
## Print DxC 600i Supply, Reagent and Calibration Status



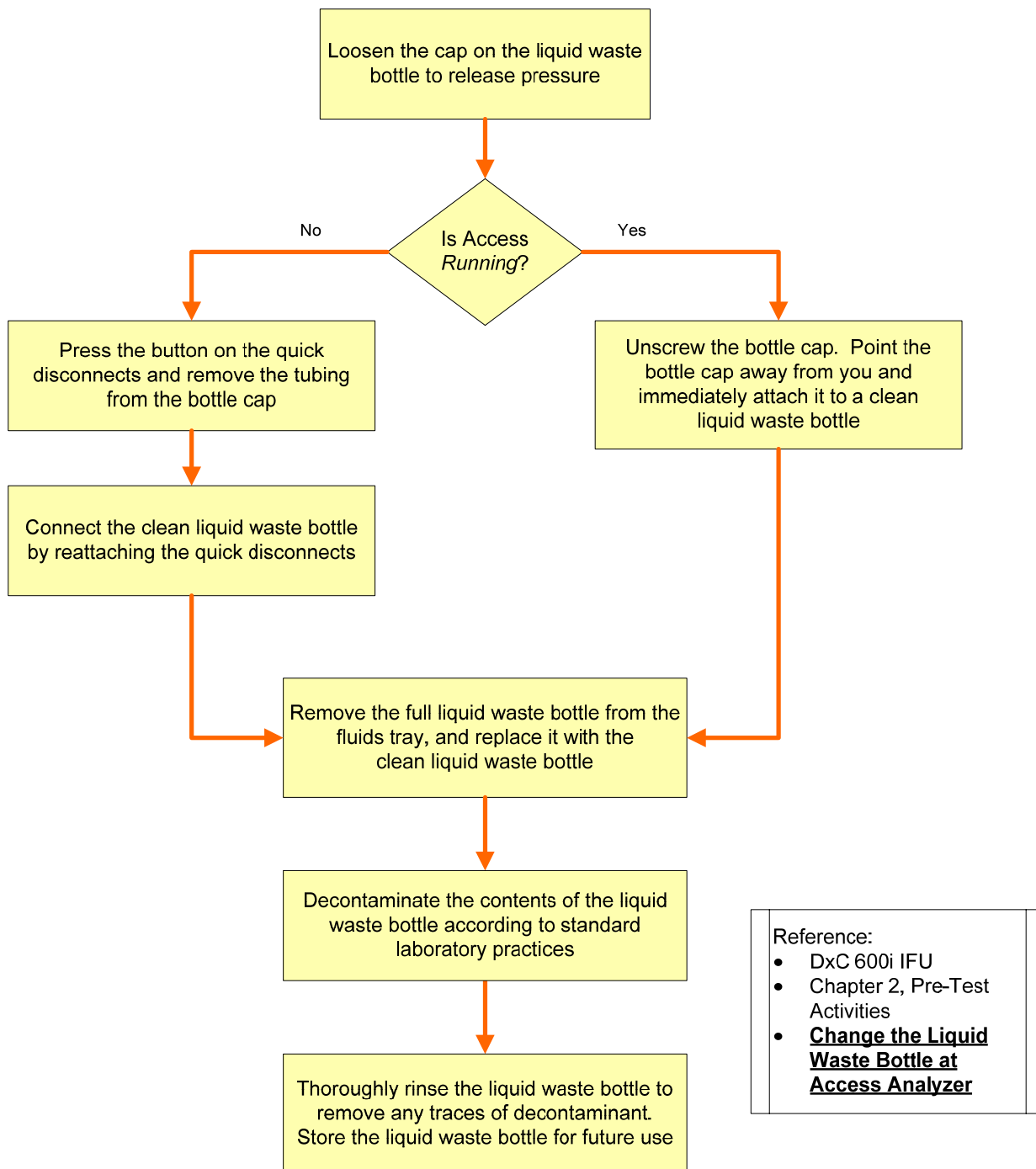
### Reference:

- DxC 600/800 IFU
- Chapter 4, Reagent Load/Calibration
- Reagent Load
- **Pre-Run Checklist**

## Change Access Wash Buffer



## Empty Access Liquid Waste



## Change Substrate

Select the <Substrate> button from the Access monitor



Select Change Substrate [F5]

**Note:**  
Access must  
be in **READY**  
mode to  
change  
substrate

Scan the bar code on the new, equilibrated substrate bottle using the Access hand held bar code reader

Remove the cap from the new substrate bottle

Unscrew the substrate supply cap from the bottle in use and immediately place the inlet tubing and cap onto the new bottle

Place the new bottle back in the fluids tray

Select Done [F1]

A prompt will appear asking if you want to prime substrate

Select Yes [F1]

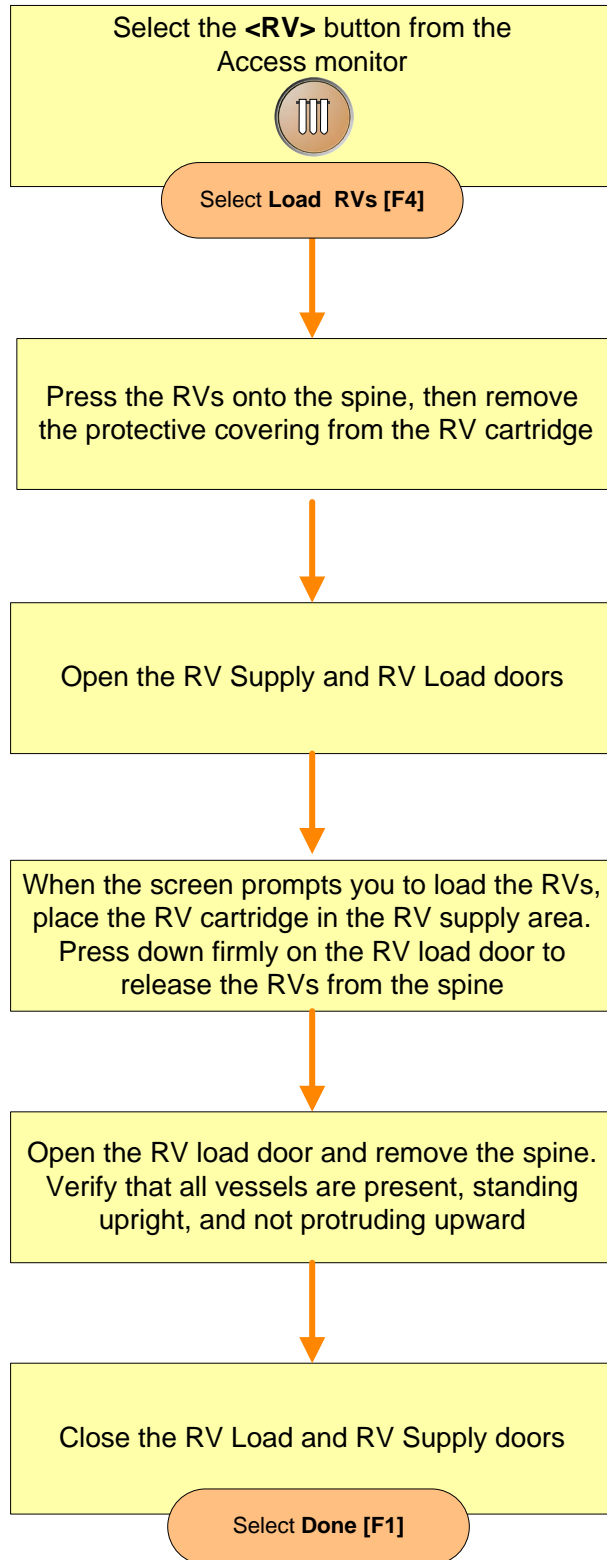
Discard empty substrate bottle

Place a new bottle of substrate in the fluids tray to equilibrate to room temperature

### Reference:

- DxC 600i IFU
- Chapter 2, Pre-Test Activities
- **Change the Substrate Bottle at Access Analyzer**

## Load Access RVs



### Reference:

- DxC 600i IFU
- Chapter 2, Pre-Test Activities
- Load the Reaction Vessel (RV) Cartridges onto Access Analyzer

**Note: If quantity of RVs is <28, Access must be in READY mode to load RVs**



## Change Access Reaction Vessel Waste Bag

Select the <RV Waste> button from the Access monitor



Select **Change RV Waste Bag [F6]**

Open the RV Supply door

Unfold a new waste bag; grasp its sides, and pull gently to expand it

Remove the old waste bag, seal it, and discard according to standard laboratory practices

Place the new waste bag in position by sliding the plastic collar on the bag into the slot on the waste chute. Ensure the collar is firmly seated

Close the RV Supply door

Select **Done [F1]**

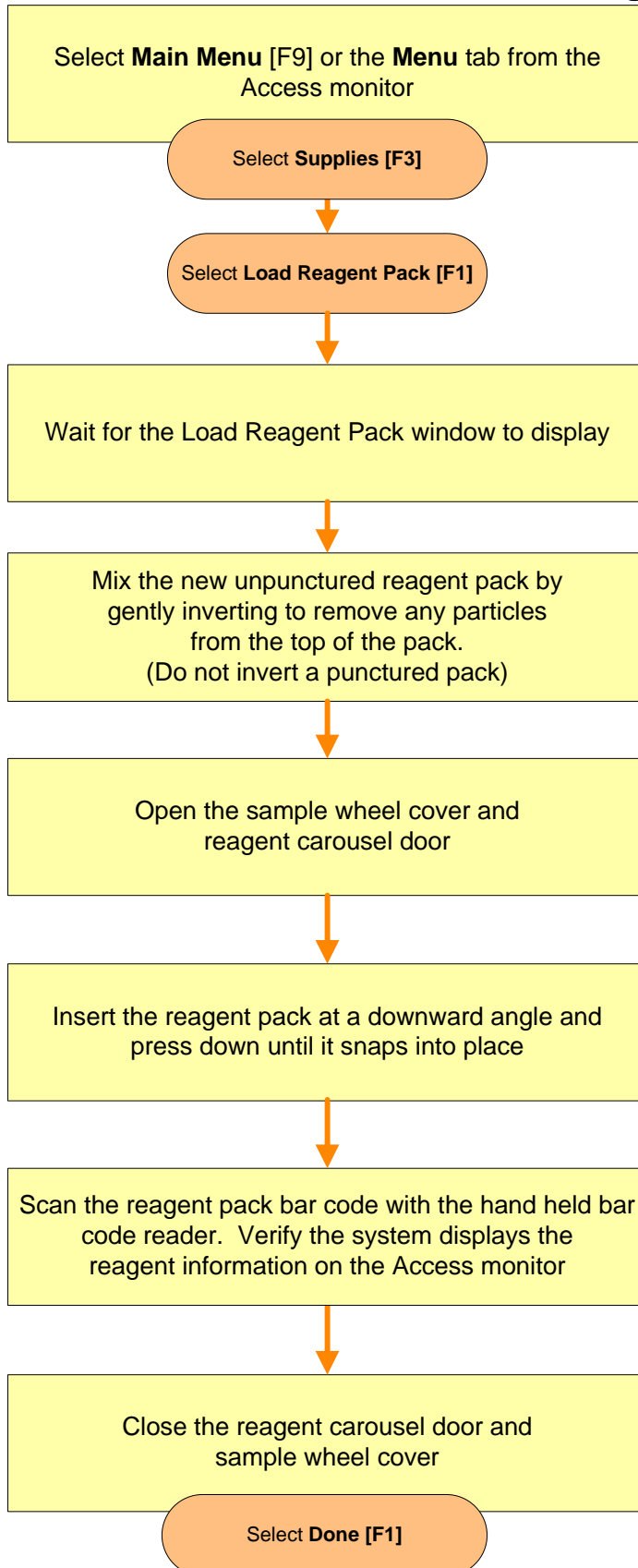
### Reference:

- DxC 600i IFU
- Chapter 2, Pre-Test Activities
- **Change the RV Waste Bag at Access Analyzer**

### Caution

When the system is running, it may eject RVs into the RV waste bag. If the system is running when you change the RV waste bag, wait until you hear an RV eject and you will have 36 seconds to change the bag

## Load Access Reagent

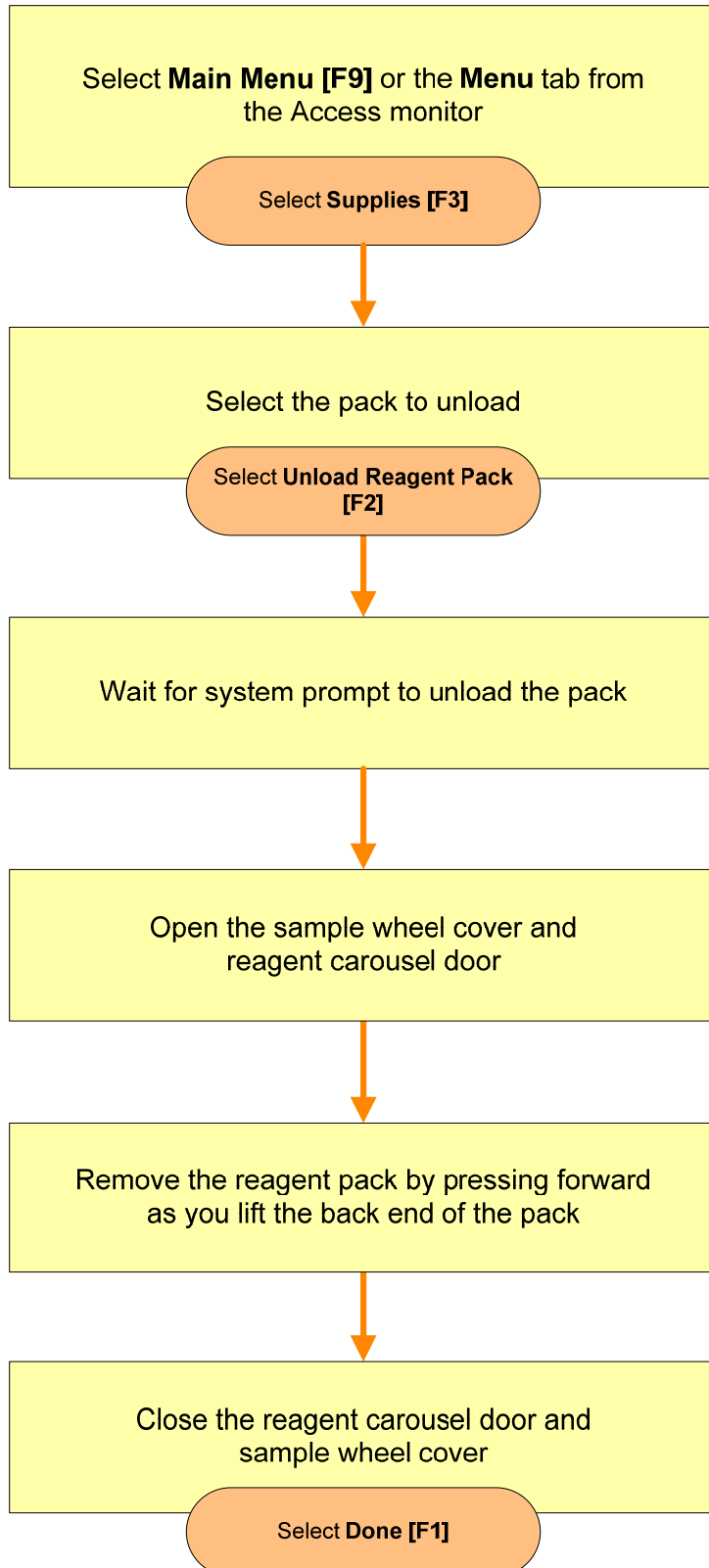


### Reference:

- DxC 600i IFU
- Chapter 2, Pre-Test Activities
- **Load a Reagent Pack onto Access Analyzer**

**Warning: Do NOT move a partially used reagent pack from one Access system to another. It will be inventoried as a full pack and inaccurate results may occur.**

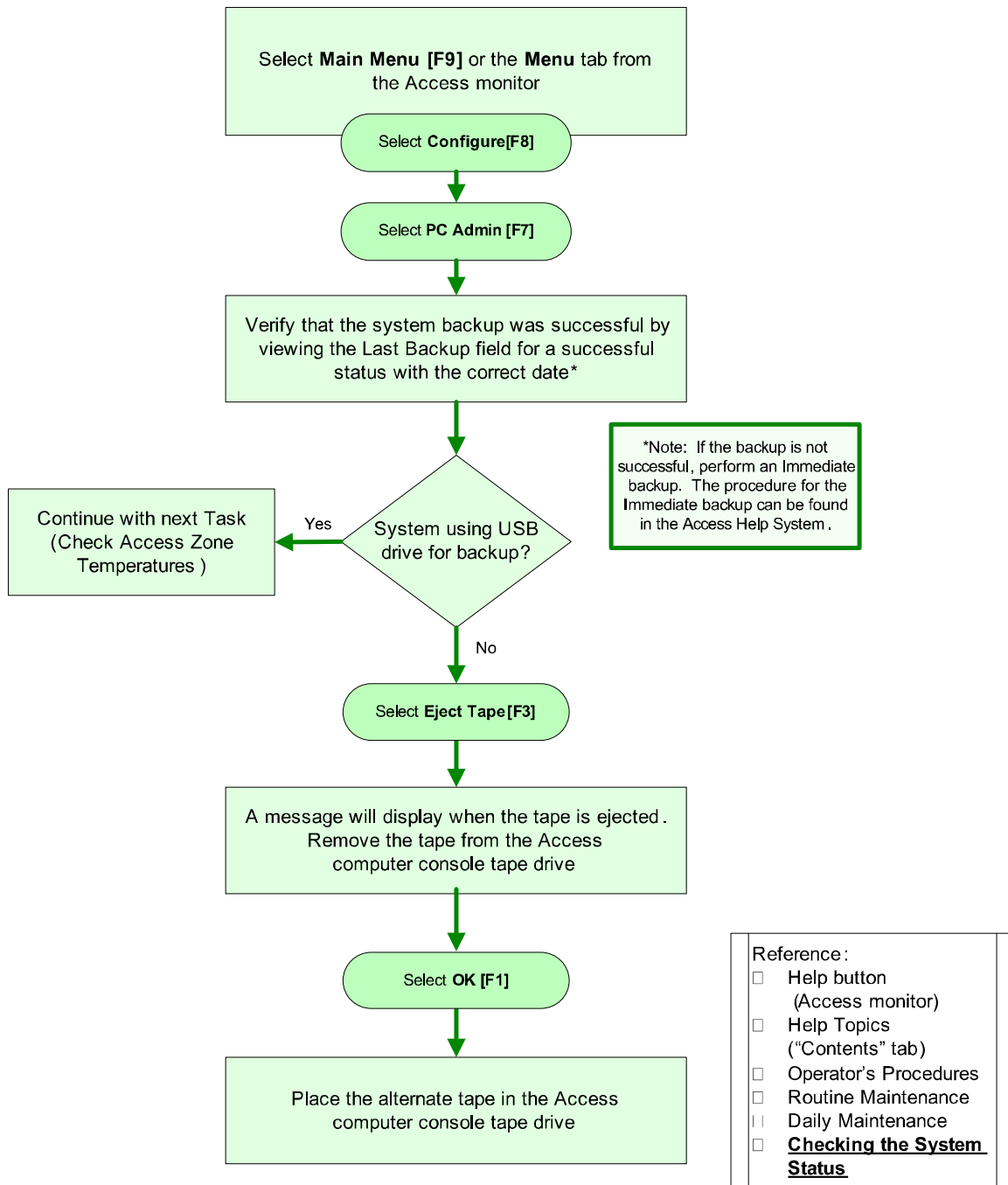
## Unload Access Reagent



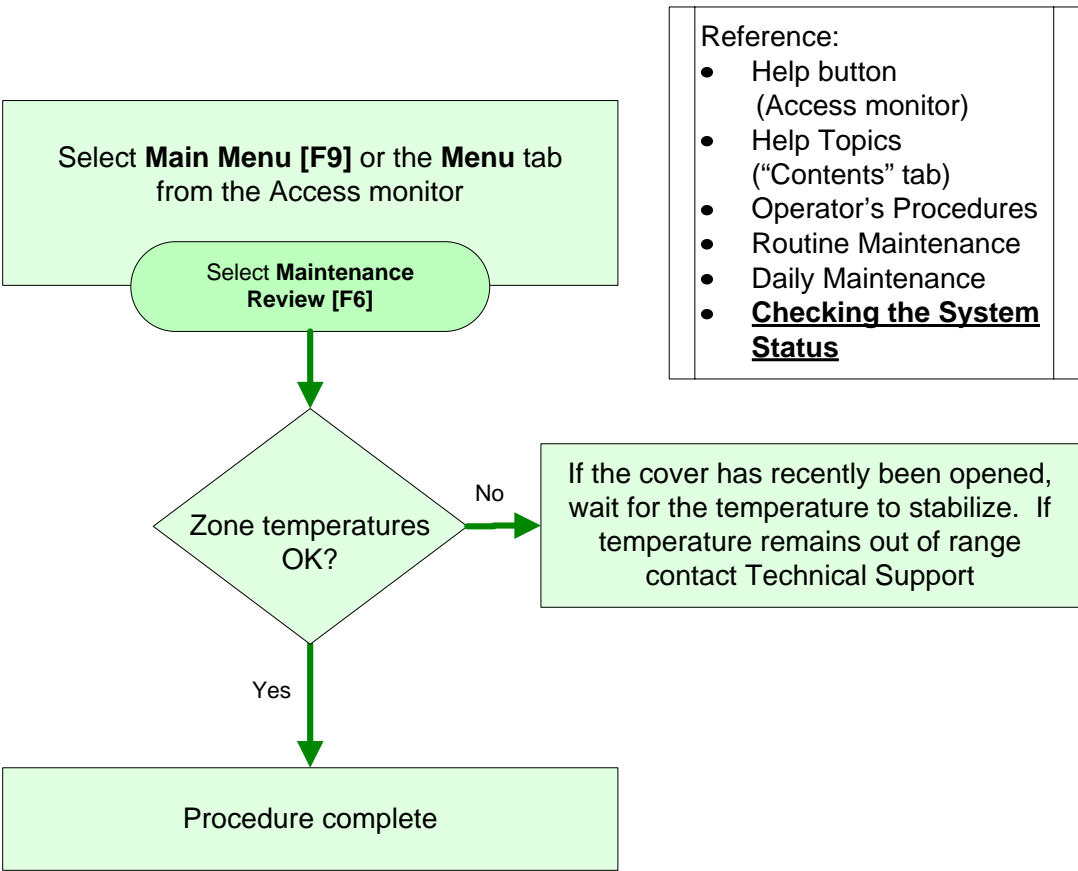
### Reference:

- DxC 600i IFU
- Chapter 2, Pre-Test Activities
- Load a Reagent Pack onto Access Analyzer
- **Unload the Reagent Pack**

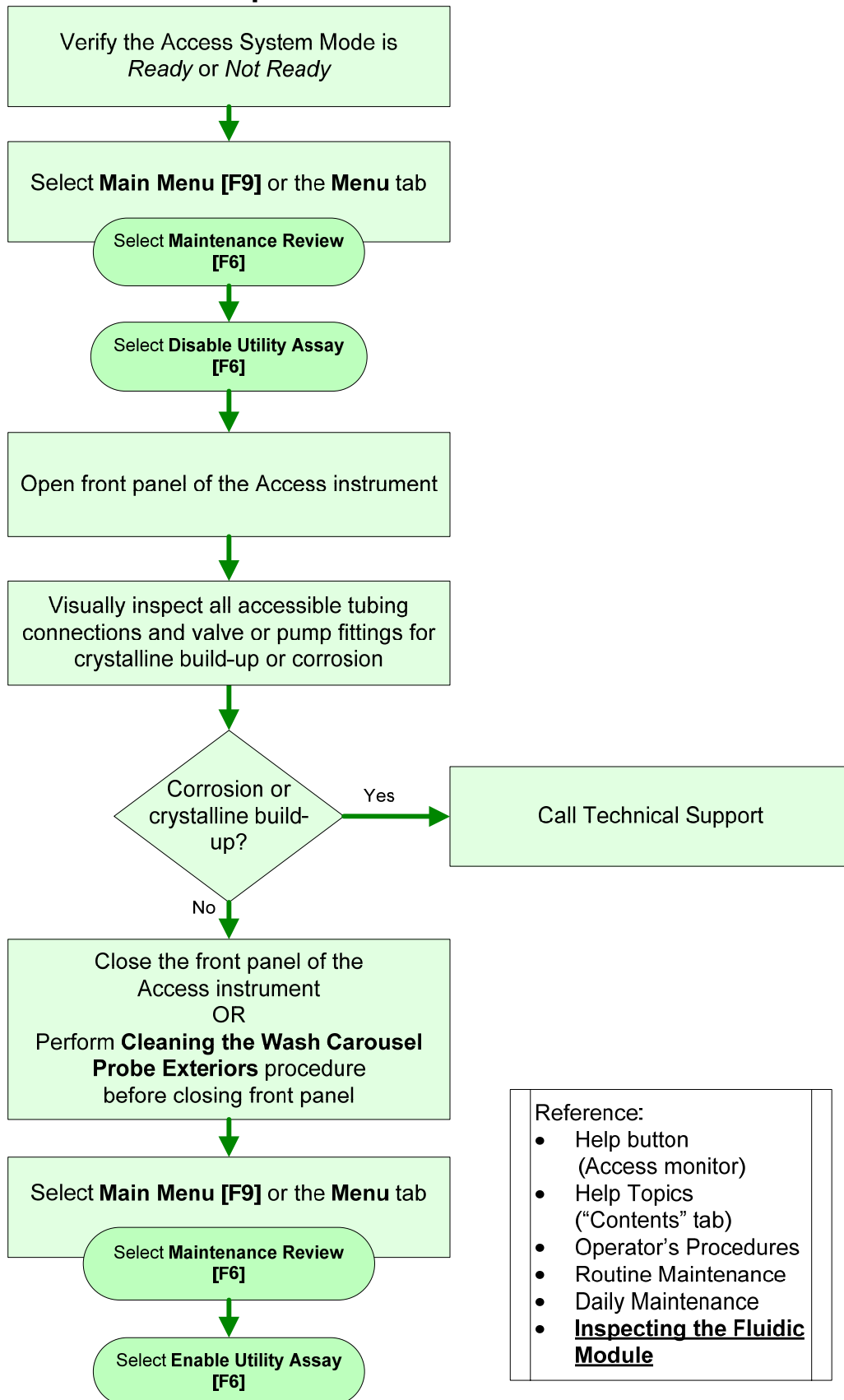
## Check Access System Backup



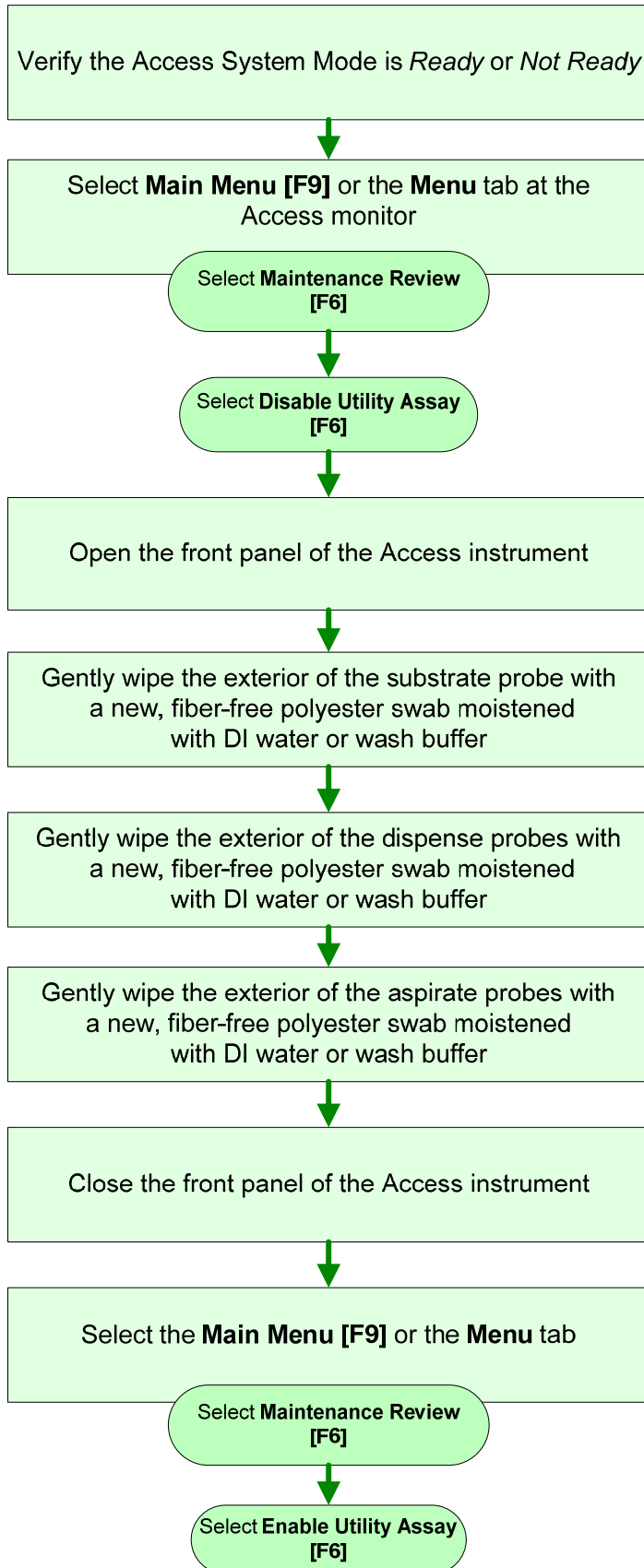
# Check Access Zone Temperatures



## Inspect Access Fluidics



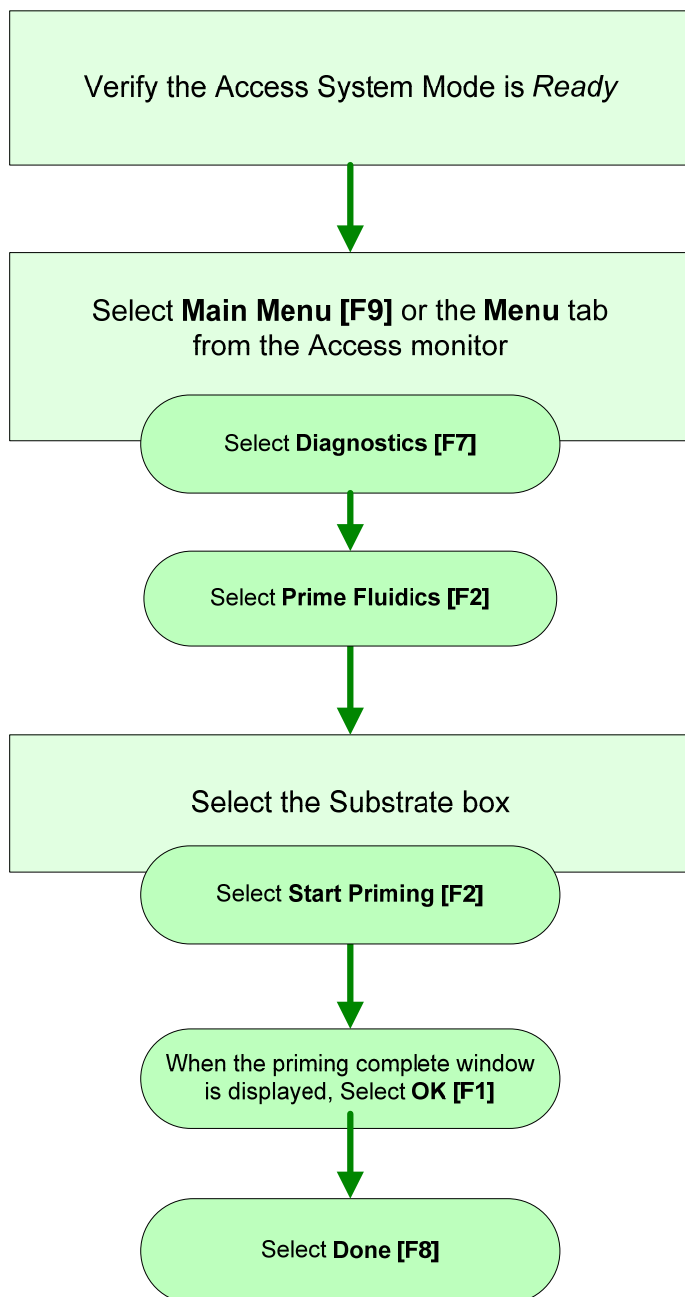
## Clean Wash Carousel Probe Exteriors



### Reference:

- Help button (Access monitor)
- Help Topics ("Contents" tab)
- Operator's Procedures
- Routine Maintenance
- Daily Maintenance
- **Cleaning the Wash Carousel Probe Exteriors**

## Prime Substrate

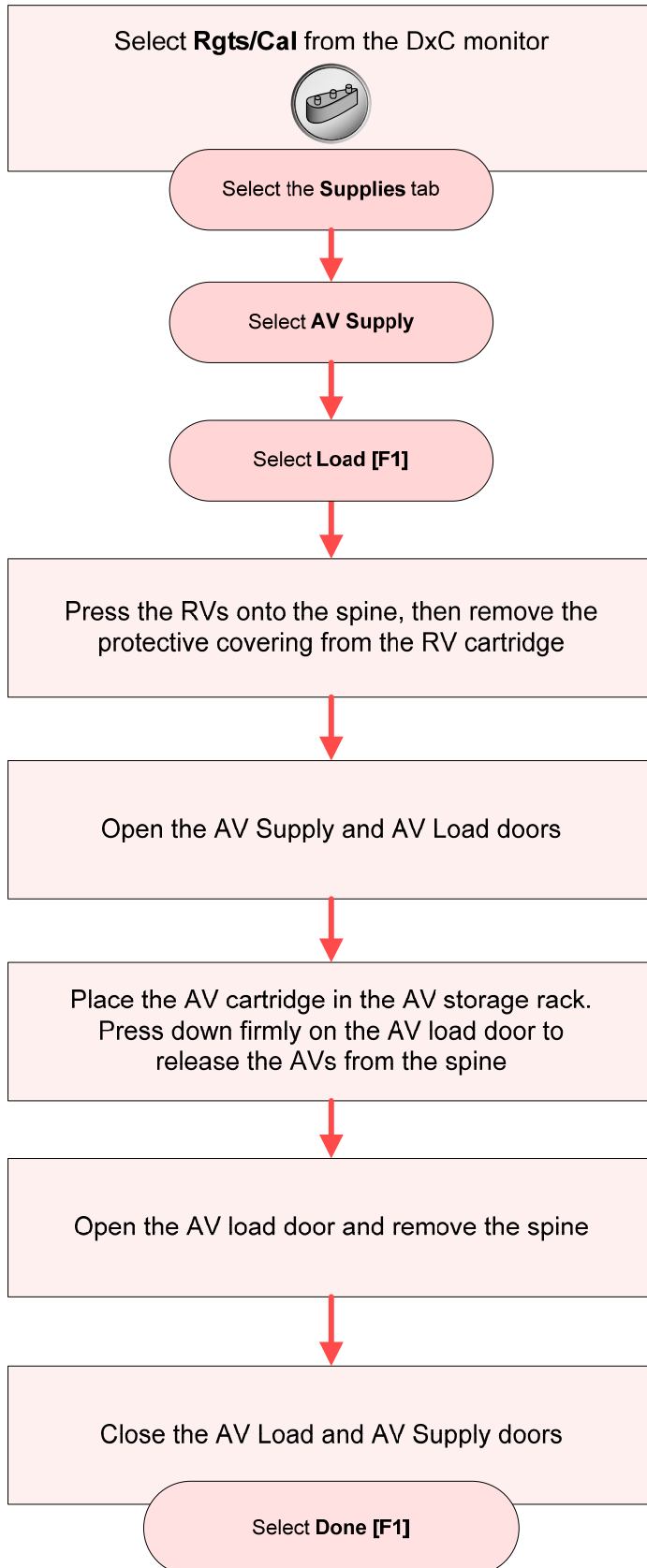


### Reference:

- Help button (Access monitor)
- Help Topics ("Contents" tab)
- Operator's Procedures
- Routine Maintenance
- Daily Maintenance
- **Priming the Substrate**

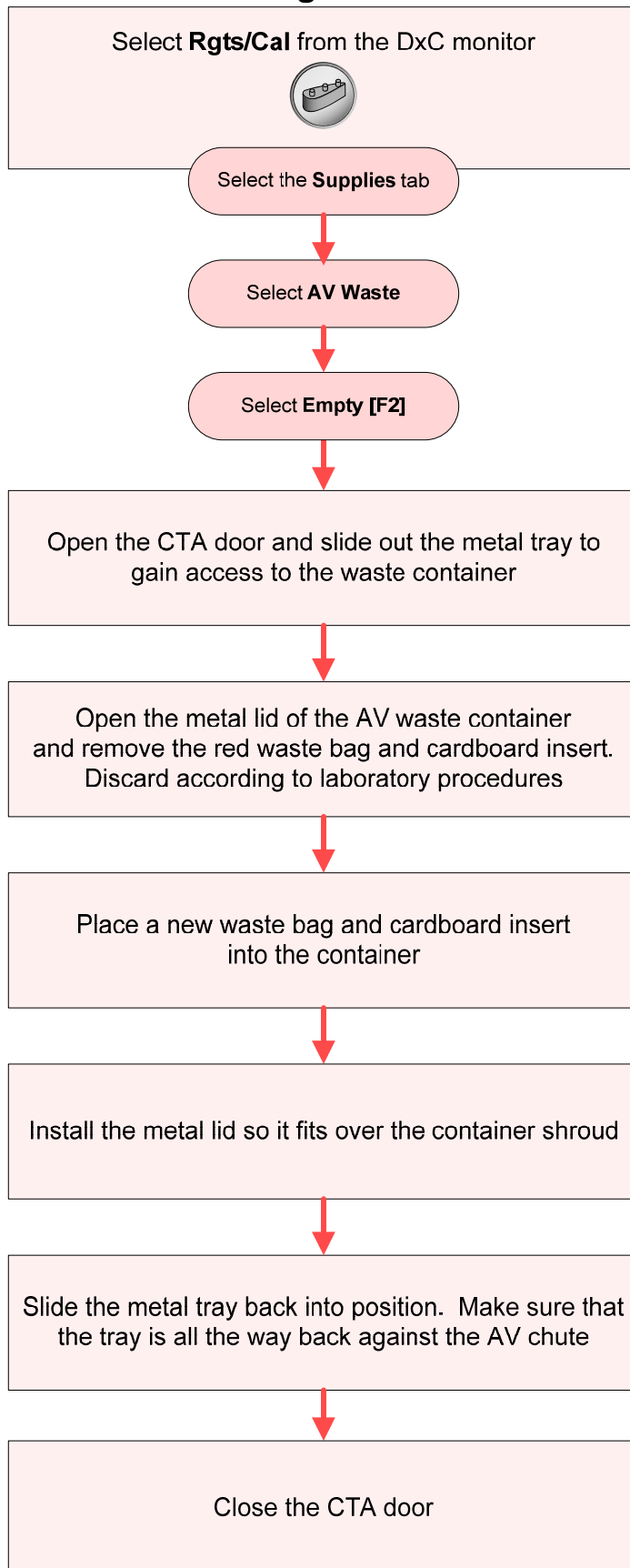


## Load AVs at the CTA



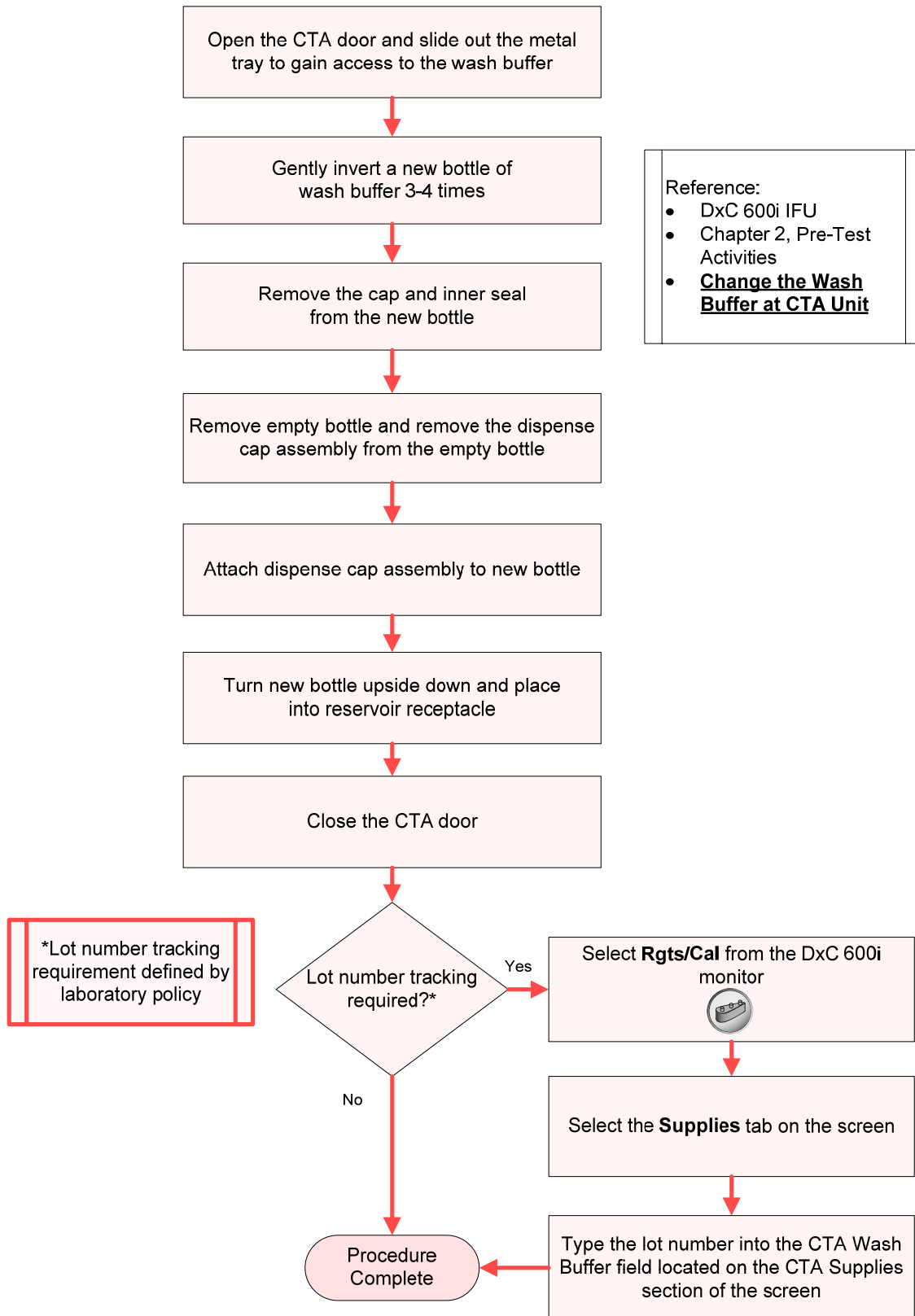
- DxC 600i IFU
- Chapter 2, Pre-Test Activities
- Check and Load Supplies at CTA Unit
- **Load Aliquot Vessels (AV) Cartridges onto CTA Unit**

## Change CTA AV Waste Container

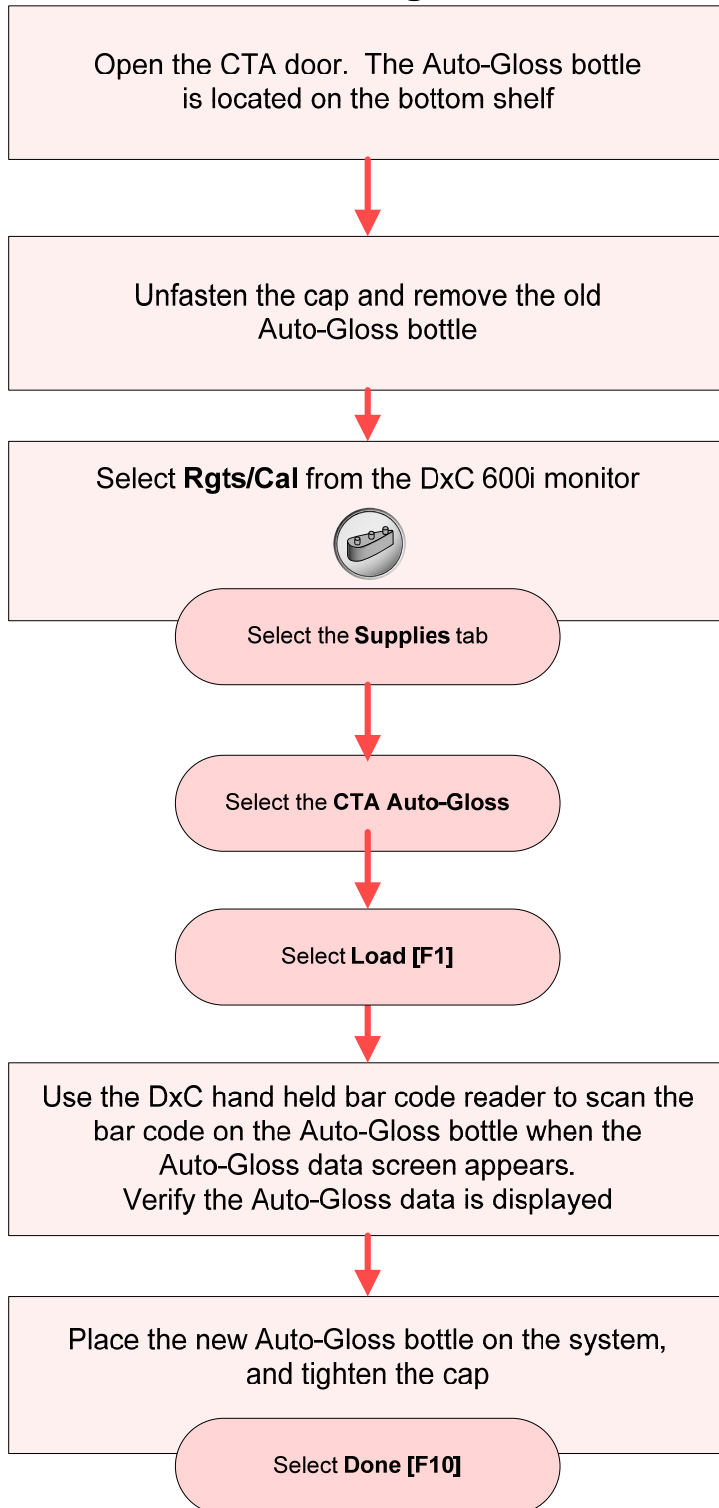


- DxC 600i IFU
- Chapter 2, Pre-Test Activities
- **Change AV Waste Container at CTA Unit**

## Change the CTA Wash Buffer



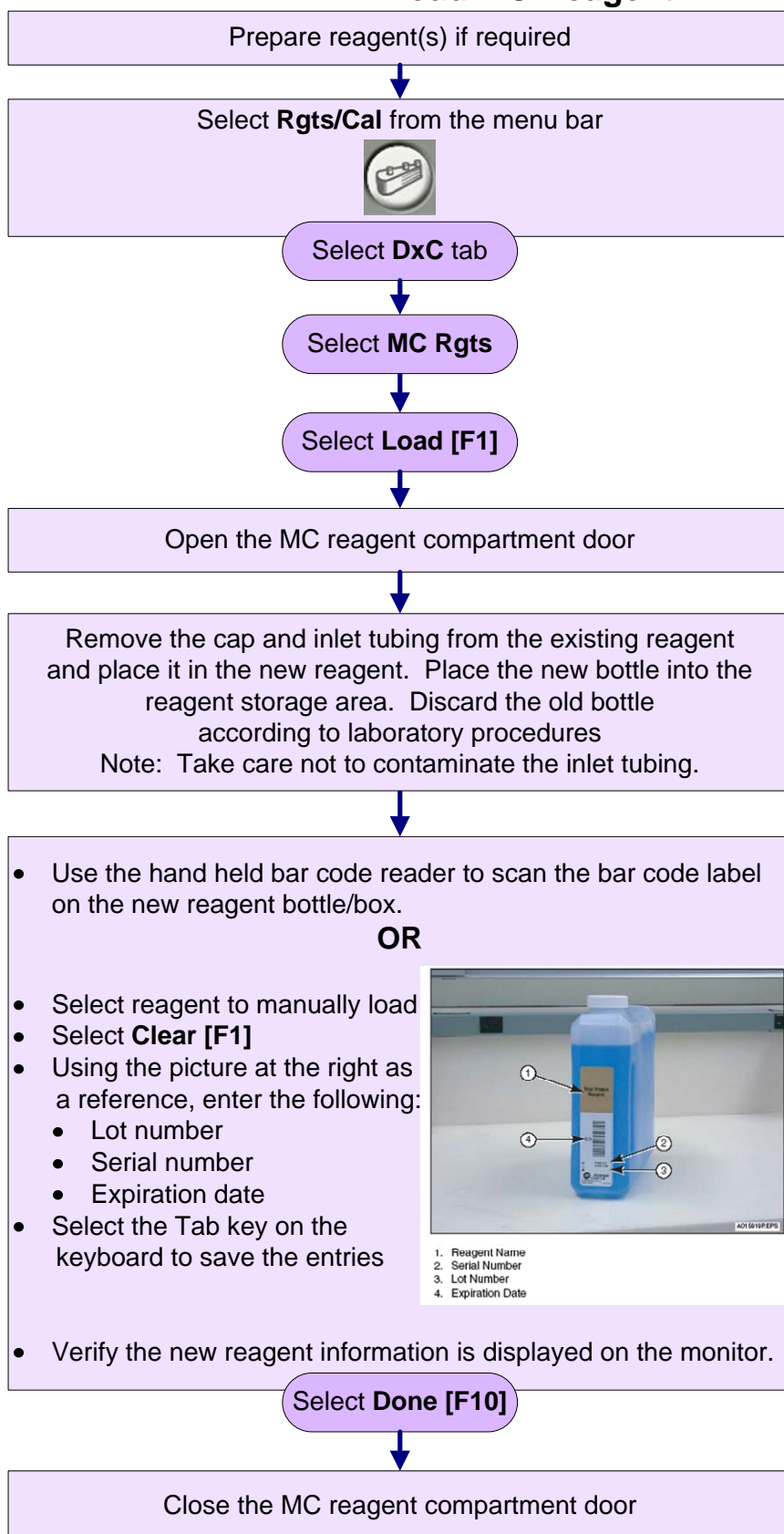
## Change the CTA Auto-Gloss



### Reference:

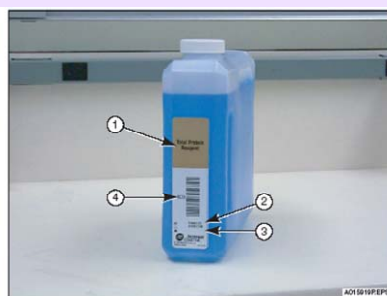
- DxC 600i IFU
- Chapter 2, Pre-Test Activities
- **Change the Auto-Gloss Solution at CTA Unit**

## Load MC Reagent



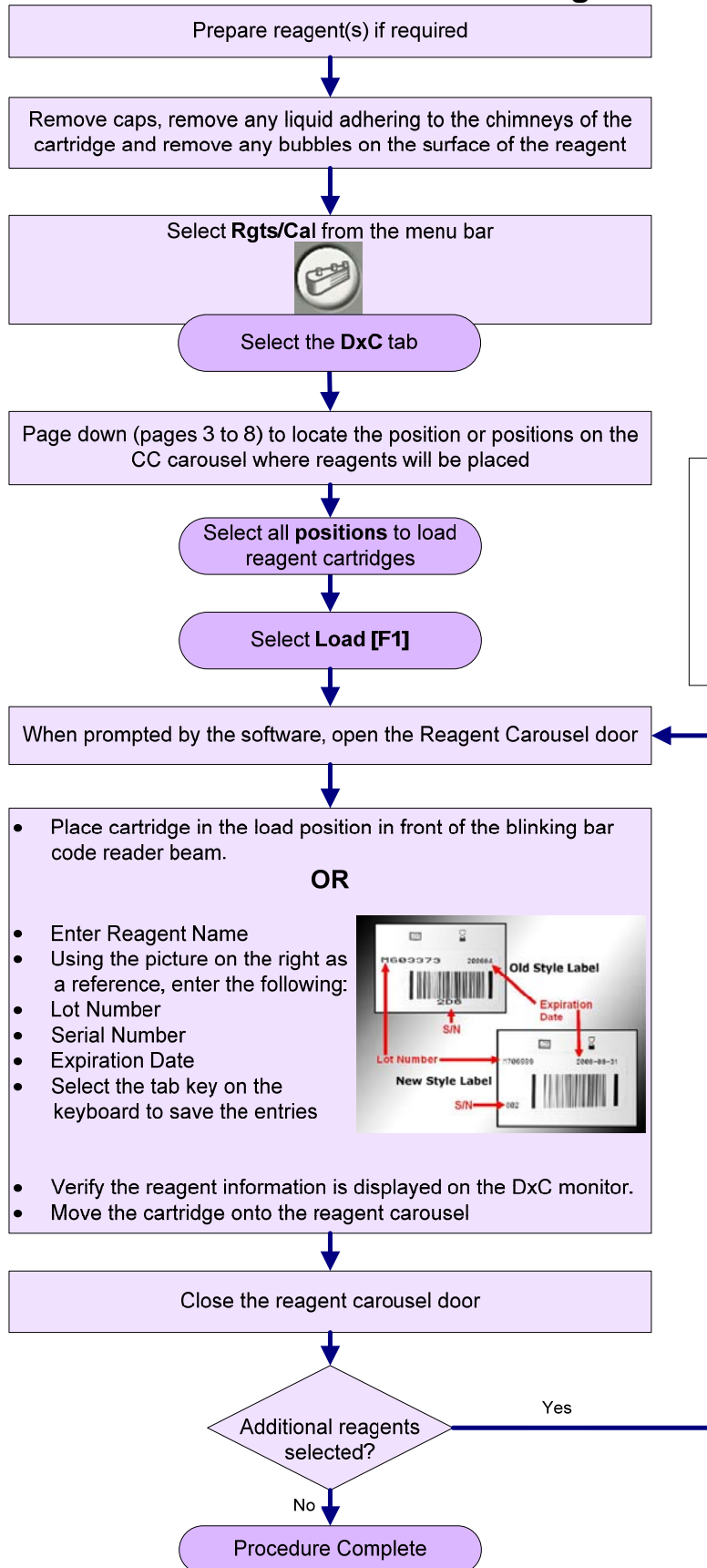
### Reference:

- DxC 600i IFU
- Chapter 2, Pre-Test Activities
- Check and Load Supplies at DxC Analyzer
- Load/Unload MC Reagents onto DxC Analyzer**



1. Reagent Name
2. Serial Number
3. Lot Number
4. Expiration Date

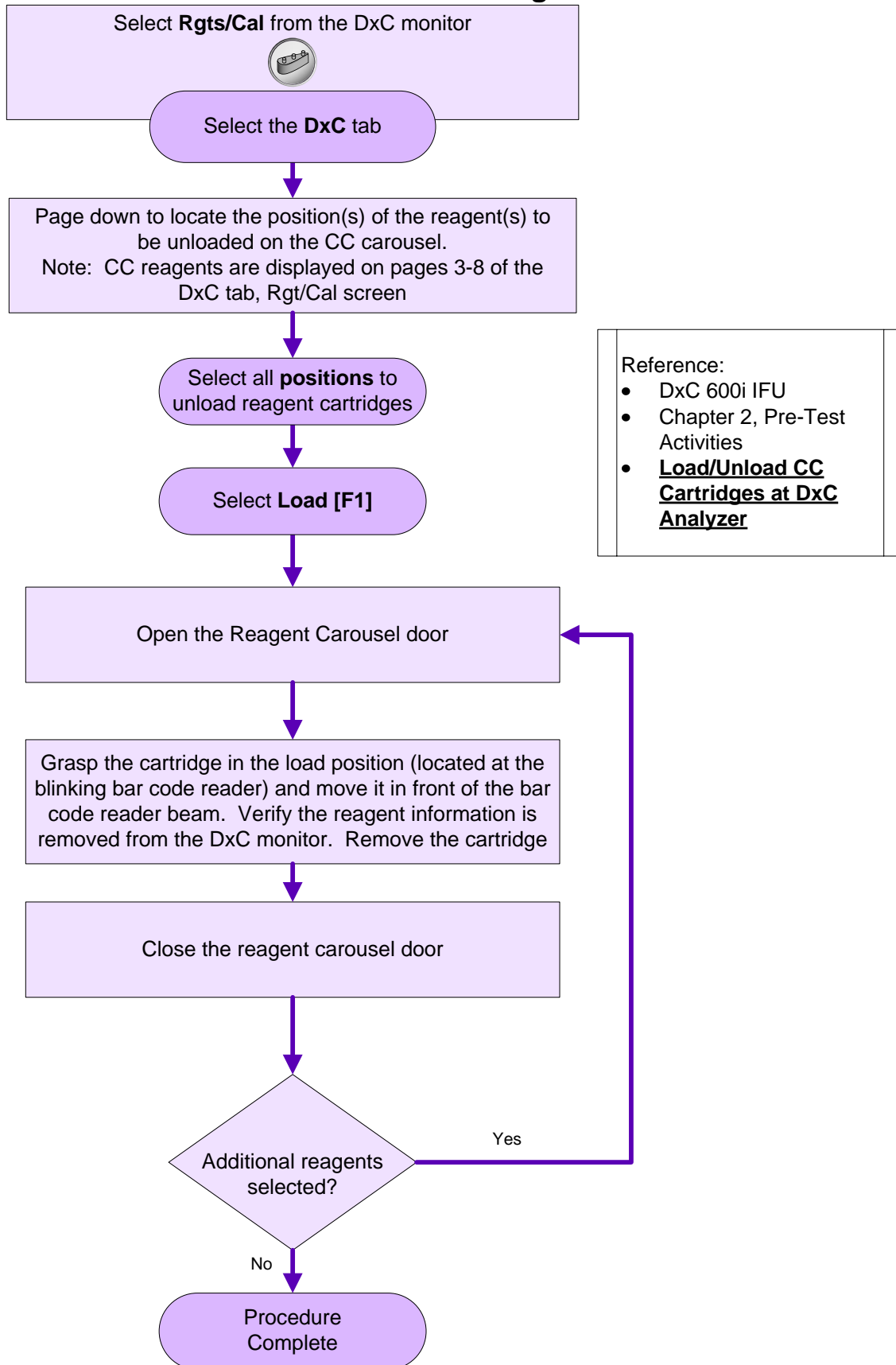
## Load CC Reagent



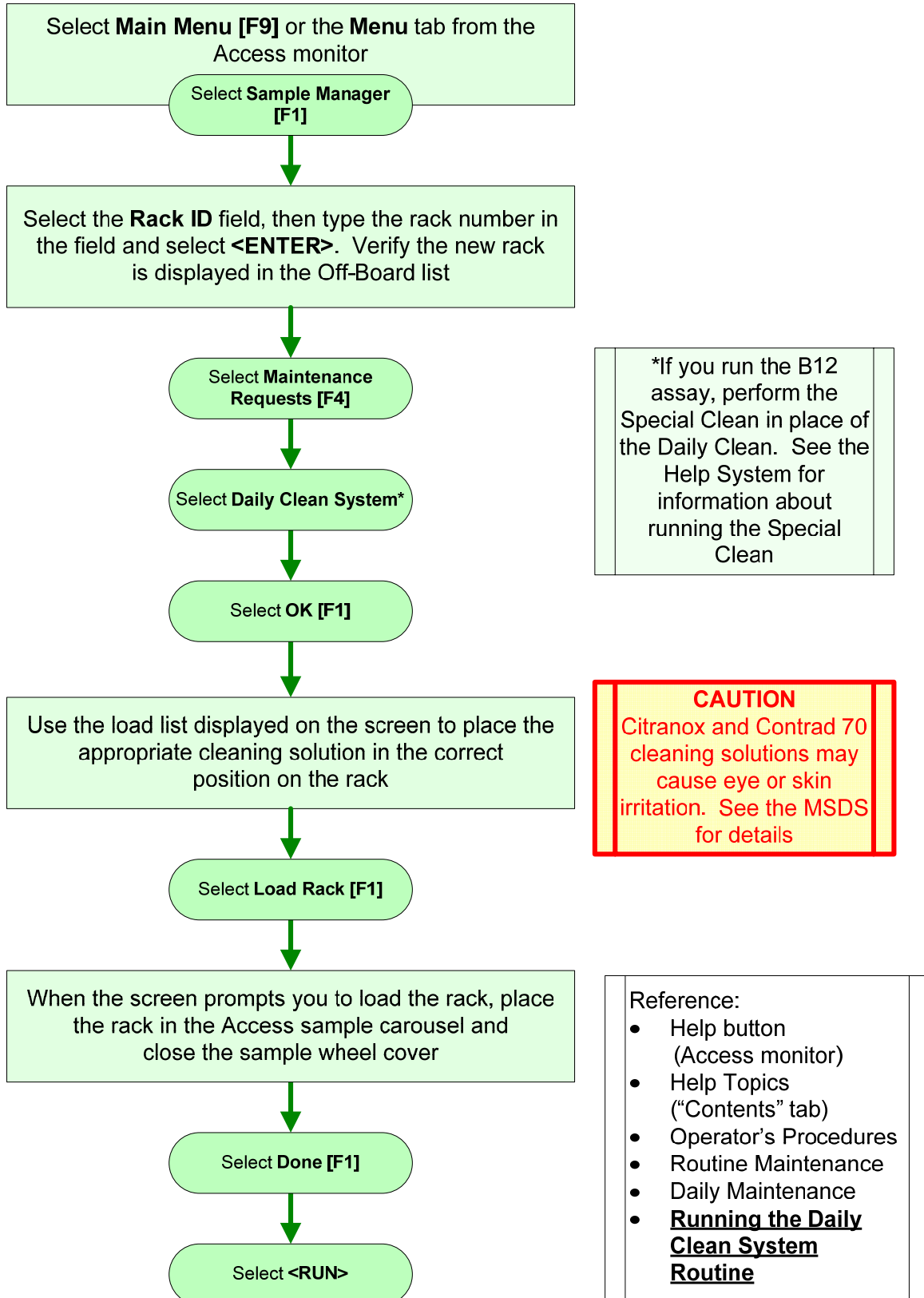
### Reference:

- DxC 600i IFU
- Chapter 2, Pre-Test Activities
- Load/Unload CC Cartridges at DxC Analyzer

## Unload CC Reagent

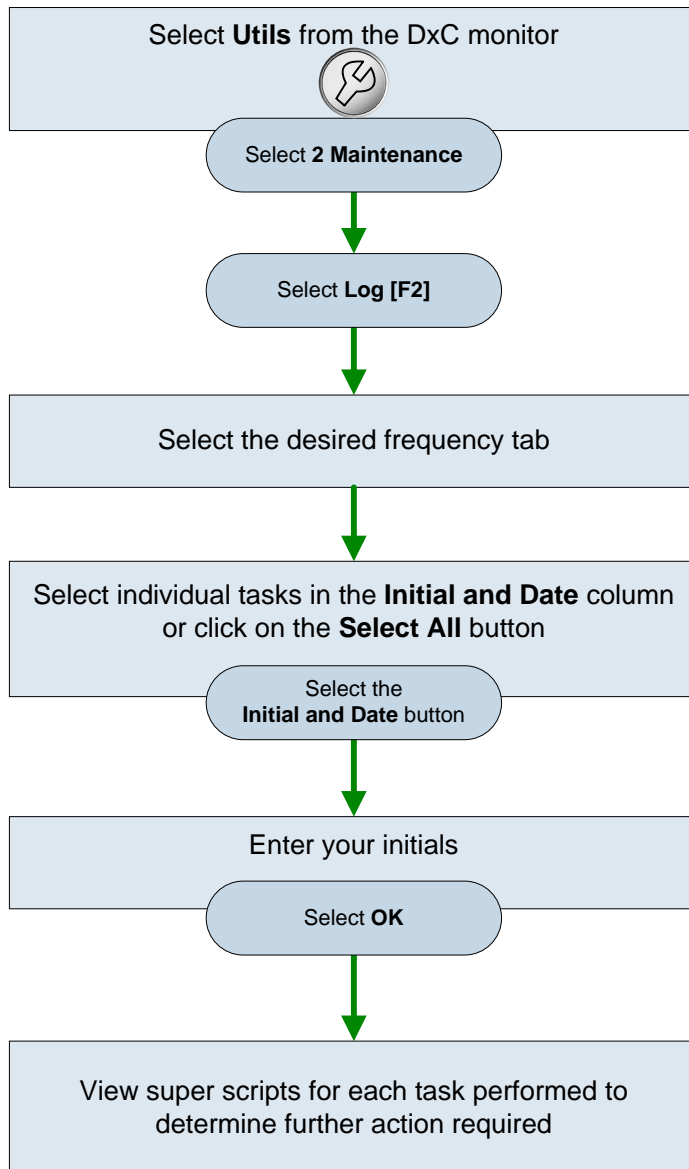


## Process Daily Clean System Routine



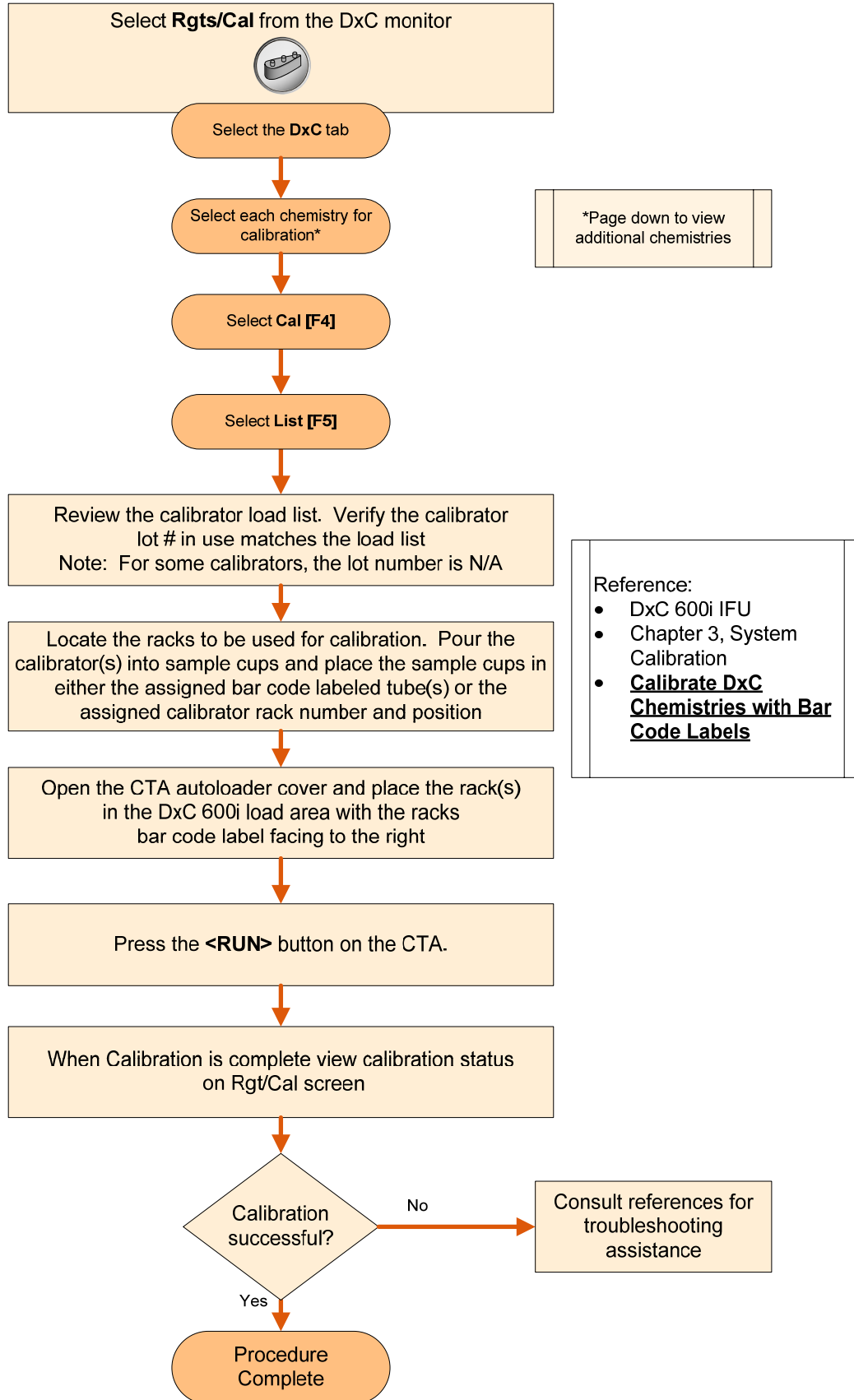


## Initial and Date Electronic Maintenance Log

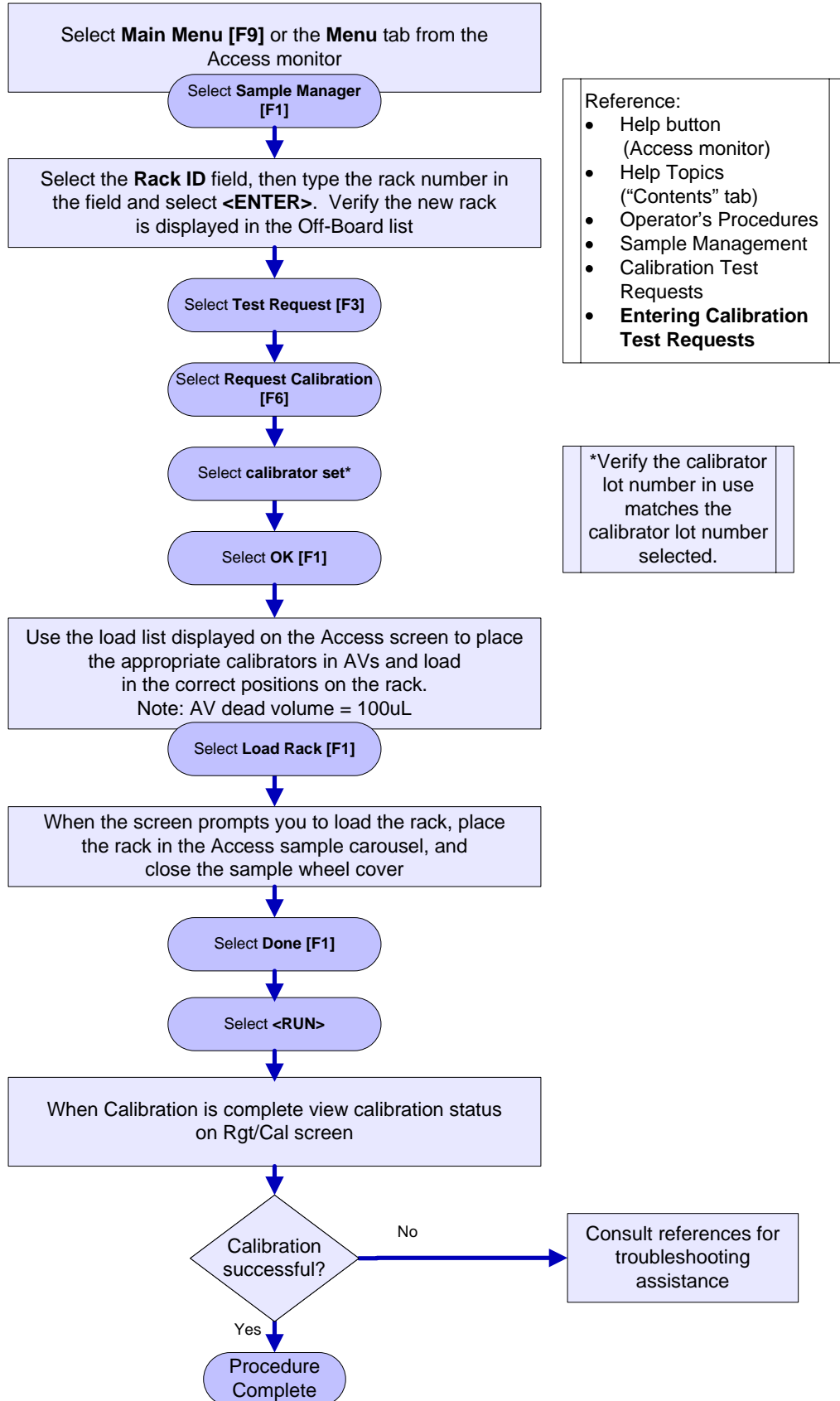


- DxC 600i IFU
- Chapter 6,  
Maintenance  
Procedures
- Electronic Maintenance  
Log
- **Accessing the  
Scheduled Log  
Feature**

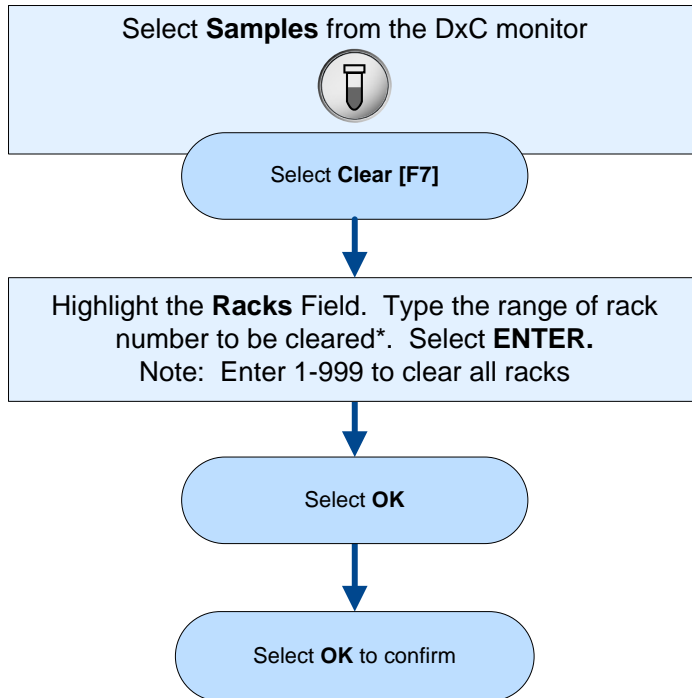
## Calibrate DxC Chemistries



## Calibrate Access Assays



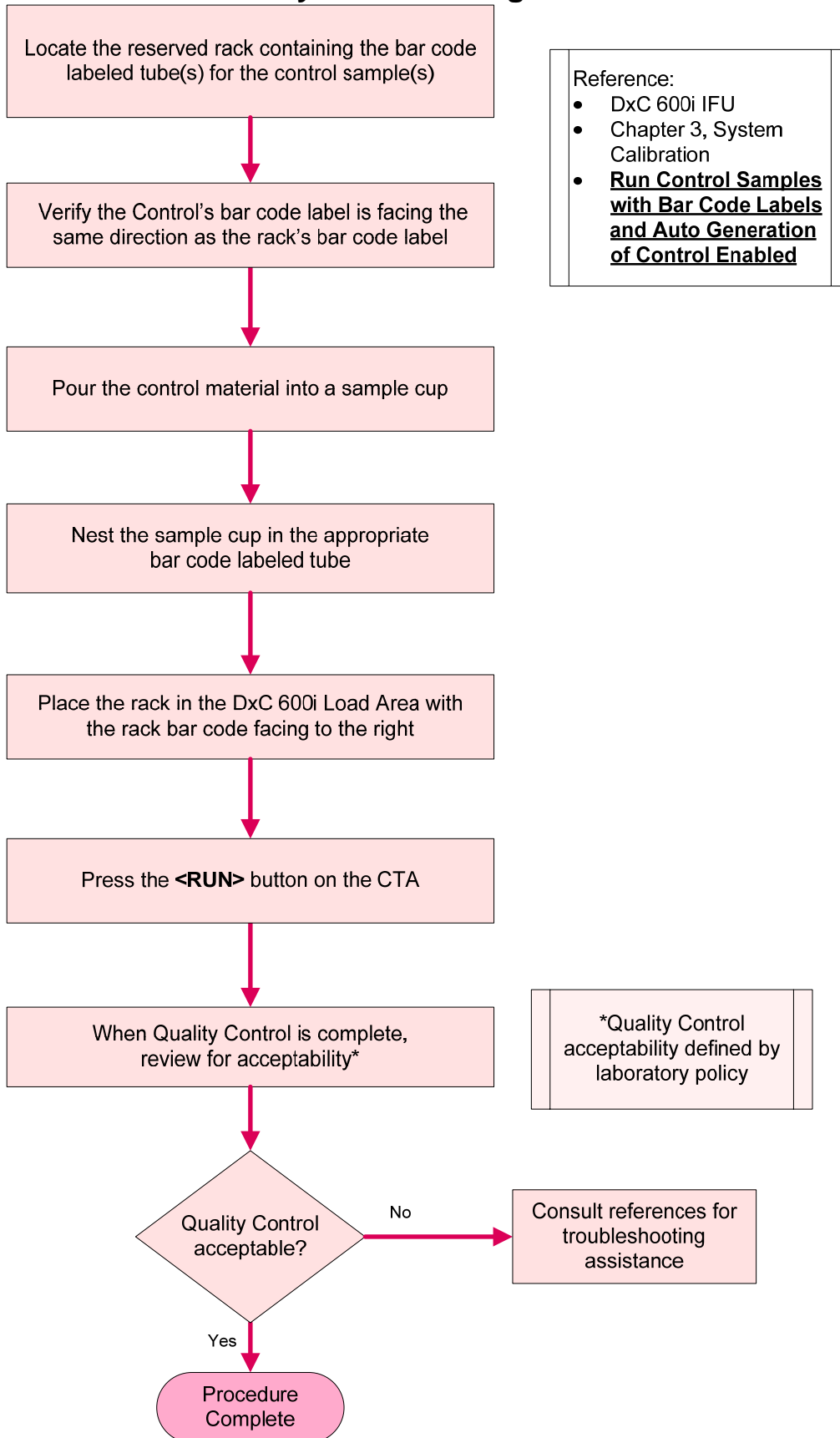
## Clear DxC Racks



### Reference:

- DxC 600/800 IFU
- Chapter 6, Sample Programming and Processing
- Clear Samples
- **Procedure for Clearing Samples**

## Process Quality Control using Auto Generation



## Manually Program Quality Control

